

10 June 2026



## DAILY CURRENCY REPORT

10 June 2026

## Domestic Currencies

Currency	Expiry	Open	High	Low	Close	% Change
USDINR	25-Jun-26	95.6000	95.7600	95.2900	95.4000	-0.30
USDINR	29-Jul-26	96.0000	96.1100	95.6300	95.7350	-0.28
EURINR	25-Jun-26	110.4000	110.6600	110.2700	110.4500	-0.06
GBPINR	25-Jun-26	127.8100	128.1950	127.6000	127.7900	-0.10
JPYINR	25-Jun-26	59.8800	59.8825	59.7775	59.7775	-0.37

## Open Interest Snapshot

Currency	Expiry	% Change	% Oi Change	Oi Status
USDINR	25-Jun-26	-0.30	-0.99	Long Liquidation
USDINR	29-Jul-26	-0.28	3.75	Fresh Selling
EURINR	25-Jun-26	-0.06	0.88	Fresh Selling
GBPINR	25-Jun-26	-0.10	-0.08	Long Liquidation
JPYINR	25-Jun-26	-0.37	1.23	Fresh Selling

## Global Indices

Index	Last	%Chg
Nifty	23242.10	0.52
Dow Jones	50872.11	0.17
NASDAQ	25678.82	-0.97
CAC	8203.43	0.05
FTSE 100	10227.33	-1.41
Nikkei	64637.39	-1.19

## International Currencies

Currency	Last	% Change
EURUSD	1.1541	0.05
GBPUSD	1.3378	0.05
USDJPY	160.358	-0.02
USDCAD	1.3949	-0.04
USDAUD	1.4236	-0.02
USDCHF	0.7991	-0.03

10 June 2026

## Technical Snapshot



**SELL USDINR JUN @ 95.6 SL 95.8 TGT 95.4-95.2.**

### Trading Levels

Expiry	Close	R2	R1	PP	S1	S2
25-Jun-26	95.4000	95.95	95.67	95.48	95.20	95.01

### Observations

USDINR trading range for the day is 95.01-95.95.

Rupee gains on a fall in oil prices, with expectations that regulatory measures will help India narrow its balance of payments deficit.

Fitch Ratings has reduced India's GDP growth projection to 6.4 percent for the current fiscal year.

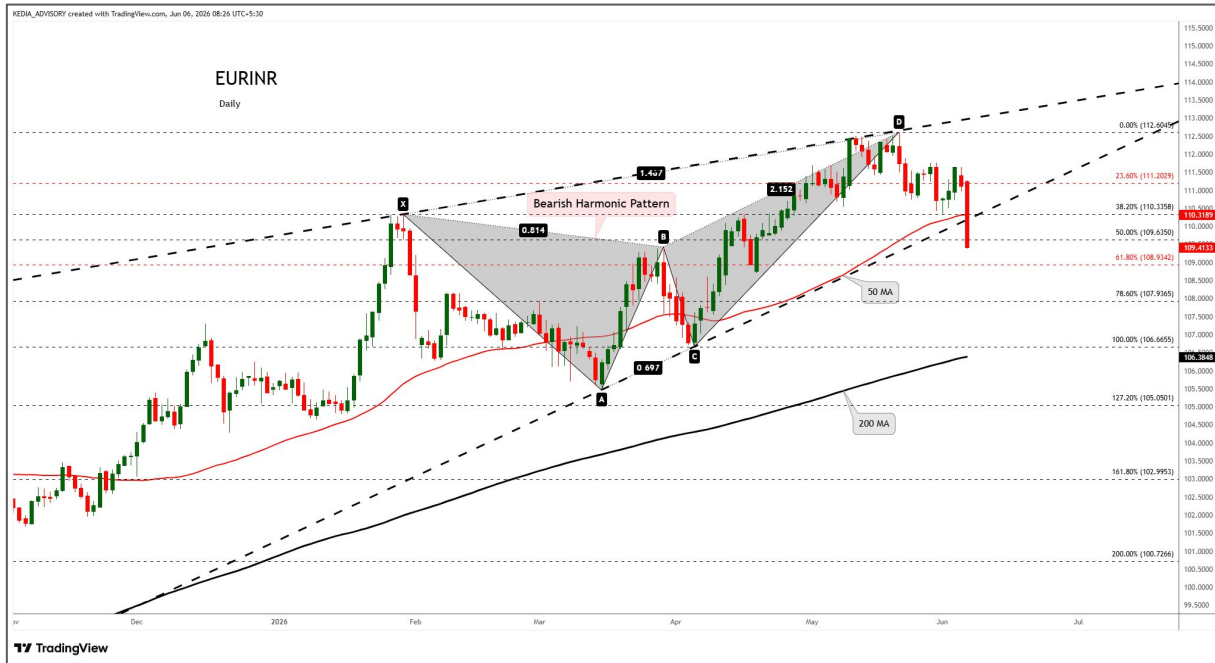
India's current account surplus at \$7.1 bn in Q4 FY26, aided by robust services exports and remittances



FOLLOW US



Technical Snapshot



**SELL EURINR JUN @ 110.5 SL 110.8 TGT 110.2-110.**

Trading Levels

Expiry	Close	R2	R1	PP	S1	S2
25-Jun-26	110.4500	110.85	110.65	110.46	110.26	110.07

Observations

EURINR trading range for the day is 110.07-110.85.

Euro steadied as renewed Middle East tensions stoked fears of a prolonged Iran conflict, exacerbating inflation concerns and dampening growth prospects.

Germany's trade surplus narrowed to €14.5 billion in April 2026 from an upwardly revised €14.7 billion in March.

Germany's industrial production rose 0.4% month-on-month in April 2026, rebounding from a revised 0.1% decline in March.

Technical Snapshot



**SELL GBPINR JUN @ 127.8 SL 128.1 TGT 127.5-127.2.**

Trading Levels

Expiry	Close	R2	R1	PP	S1	S2
25-Jun-26	127.7900	128.45	128.12	127.86	127.53	127.27

Observations

GBPINR trading range for the day is 127.27-128.45.

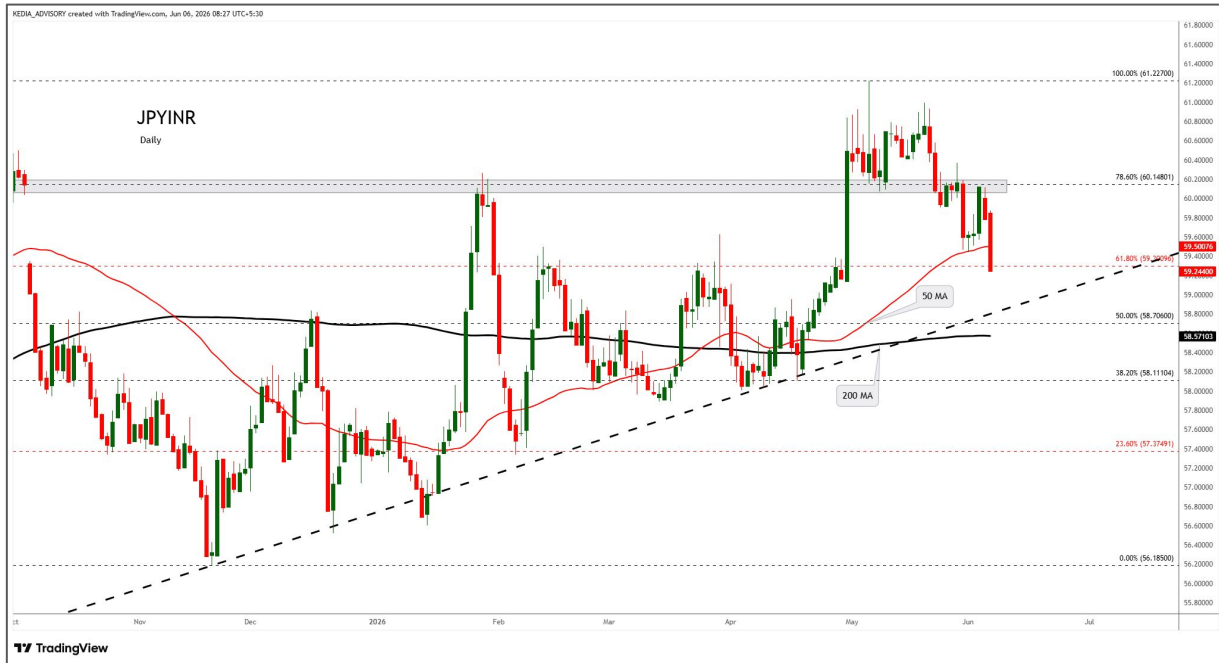
GBP dropped largely because of the strength of the dollar, which benefitted from mounting expectations for U.S. rates to rise this year

UK retail sales increased by 3.7% YOY on a like-for-like basis in May 2026, exceeding market expectations for a 0.6% gain.

Data showed permanent staff placements fell the most in 10 months in May, with firms citing low confidence and rising costs

10 June 2026

## Technical Snapshot



**SELL JPYINR JUN @ 59.8 SL 60 TGT 59.6-59.4.**

## Trading Levels

Expiry	Close	R2	R1	PP	S1	S2
25-Jun-26	59.7775	59.91	59.84	59.81	59.74	59.71

## Observations

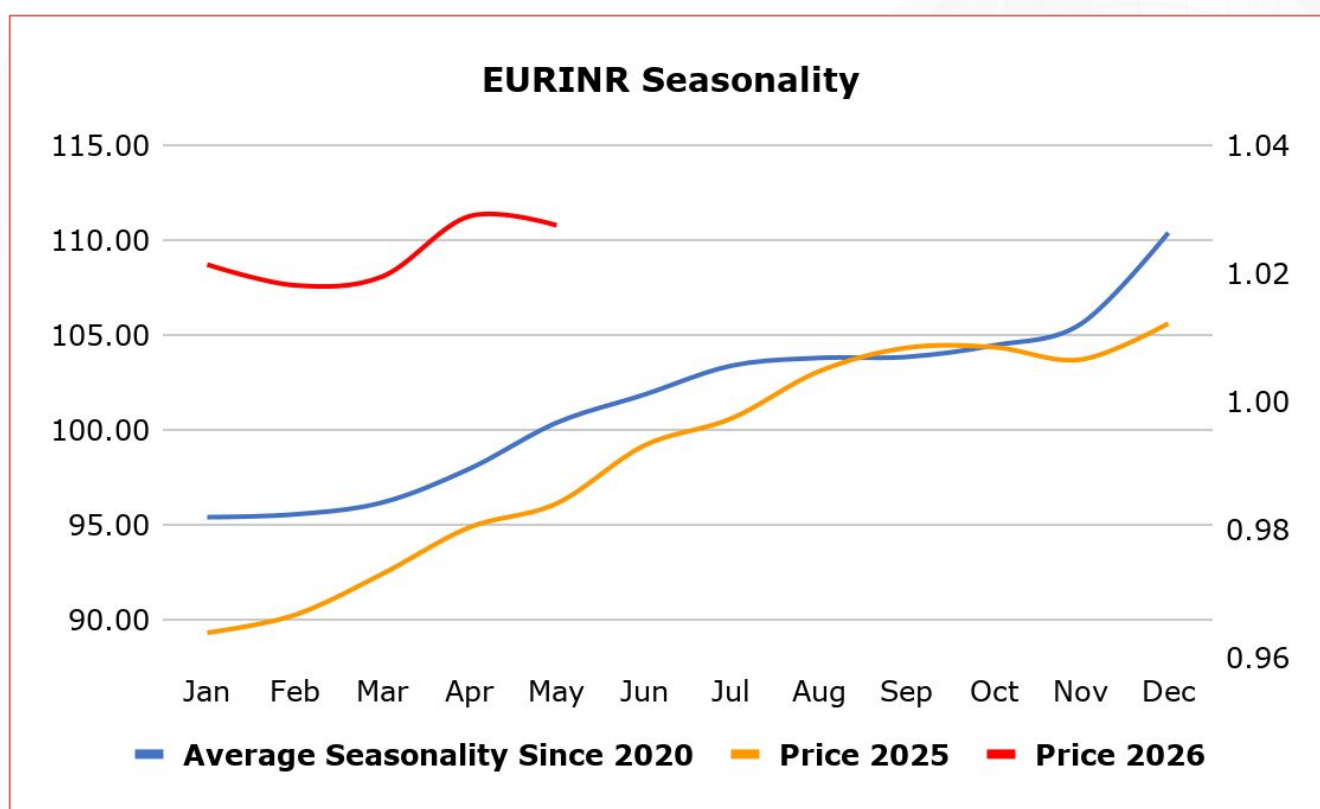
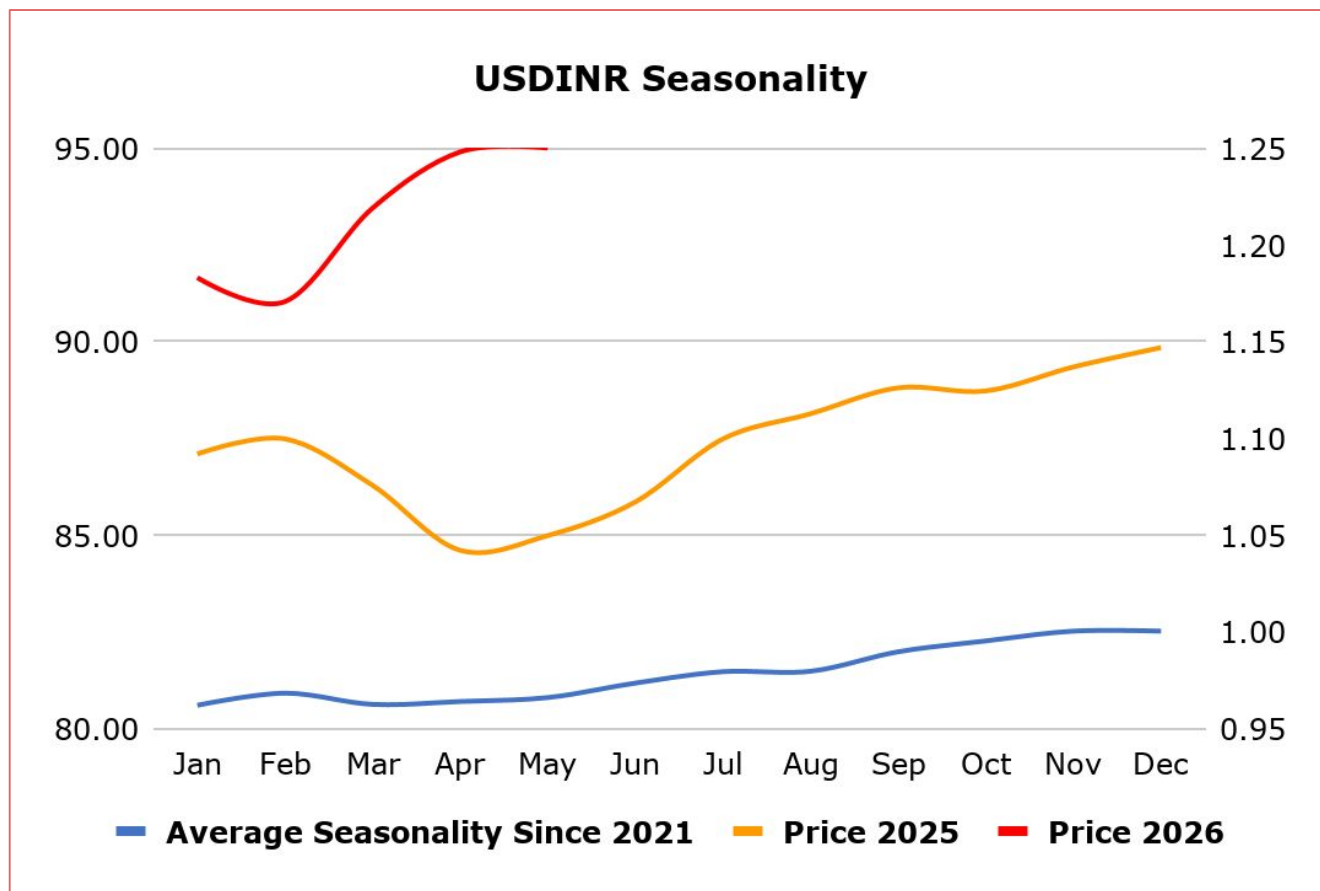
JPYINR trading range for the day is 59.71-59.91.

JPY dropped as the dollar held firm as Middle East tensions underpinned safe-haven demand.

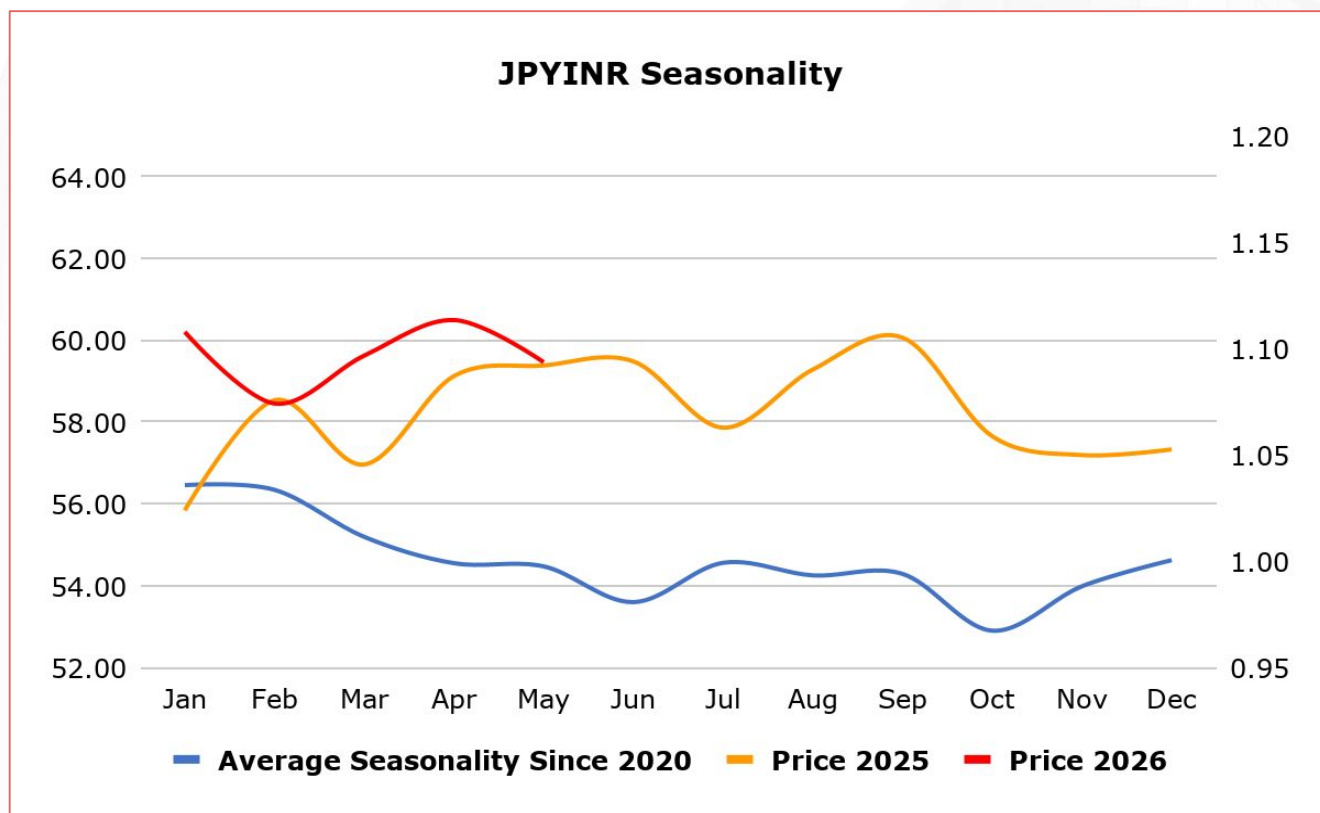
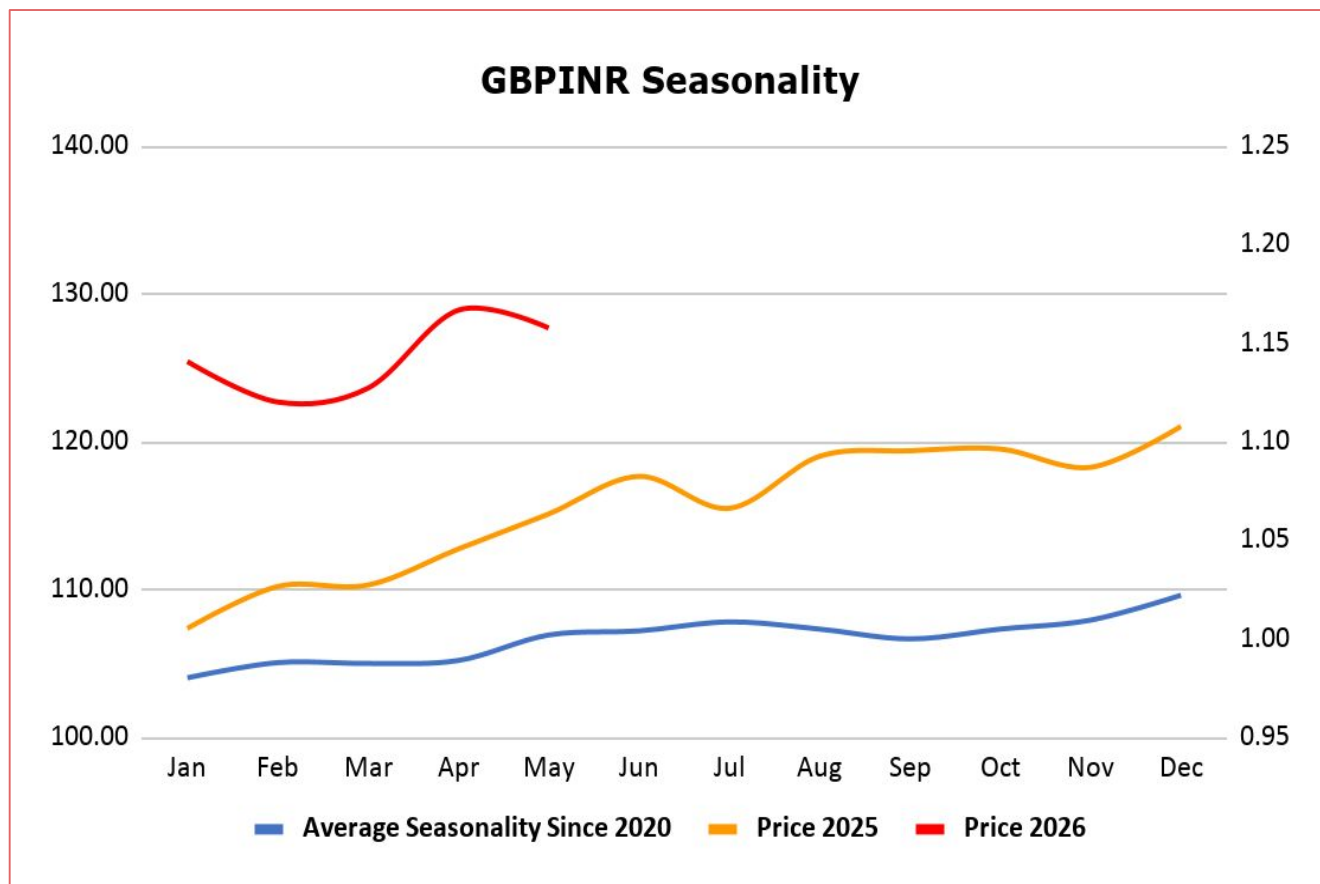
BOJ is expected to raise interest rates later as policymakers contend with persistent inflationary pressures linked to elevated energy costs.

Japan's current account surplus increased to JPY 3,907.8 billion in April 2026 from JPY 2,370.0 billion in the same month a year earlier.

10 June 2026



10 June 2026



## Economic Data

10 June 2026

Date	Curr.	Data
Jun 8	EUR	German Factory Orders m/m
Jun 8	EUR	Sentix Investor Confidence
Jun 9	EUR	German Industrial Production m/m
Jun 9	EUR	German Trade Balance
Jun 9	USD	NFIB Small Business Index
Jun 9	USD	ADP Weekly Employment Change
Jun 9	USD	Trade Balance
Jun 9	USD	Existing Home Sales
Jun 9	USD	Final Wholesale Inventories m/m
Jun 10	EUR	Italian Industrial Production m/m
Jun 10	USD	Core CPI m/m
Jun 10	USD	Core CPI y/y
Jun 10	USD	CPI m/m
Jun 10	USD	CPI y/y
Jun 10	USD	Crude Oil Inventories

Date	Curr.	Data
Jun 10	USD	10-y Bond Auction
Jun 10	USD	Federal Budget Balance
Jun 11	EUR	German WPI m/m
Jun 11	EUR	Main Refinancing Rate
Jun 11	EUR	Monetary Policy Statement
Jun 11	USD	Core PPI m/m
Jun 11	USD	PPI m/m
Jun 11	USD	Unemployment Claims
Jun 11	EUR	ECB Press Conference
Jun 11	USD	Natural Gas Storage
Jun 11	USD	30-y Bond Auction
Jun 12	EUR	German Final CPI m/m
Jun 12	EUR	French Final CPI m/m
Jun 12	USD	Prelim UoM Consumer Sentiment
Jun 12	USD	Prelim UoM Inflation Expectations

## News

China's exports picked up pace in May, as earlier front-loading by overseas buyers to pre-empt Gulf war energy costs fed through to shipments, while steady appetite for semiconductors and AI hardware lent additional support. Exports expanded 19.4% from a year earlier in U.S. dollar value terms, customs data showed, outpacing the 14.1% gain in April and a 15% rise tipped by economists. Imports notched another strong month, climbing 27.4% versus a rise of 25.3% a month prior. Economists had forecasted growth of 25%. The Middle East conflict has yet to dent China's exports, policymakers' preferred growth engine, but economists say the buffer is temporary as stockpiling peaks, costs rise and buyers begin running down inventories while they wait out a ceasefire. Separate factory activity data for May showed a steep drop in new export orders from April's two-year peak, when warehouse managers reported "booming" business amid a scramble by foreign factories to lock in supplies, suggesting the front-loading may be fading.

Japan's current account surplus increased to JPY 3,907.8 billion in April 2026 from JPY 2,370.0 billion in the same month a year earlier, exceeding market expectations of JPY 3,137 billion. The goods account surplus surged to JPY 395.7 billion from a tiny figure in the prior year, as export growth (13.9%) outpaced imports (9.5%). Also, the primary income surplus widened to JPY 4,210.0 billion from JPY 3,649.8 billion. Meantime, the services account deficit narrowed sharply to JPY 416.0 billion from JPY 725.9 billion. Also, the secondary income deficit decreased to JPY 281.8 billion from JPY 553.1 billion. Japan's bank lending rose 5.7% year-on-year in May 2026, exceeding market forecasts for a 5.6% increase and accelerating from a 5.4% gain in the previous month. The latest figure also marked the fastest growth since March 2021, with the total outstanding loans at major, regional, and shinkin banks reaching JPY 670.8 trillion. Major banks continued to drive lending growth, with outstanding loans rising 8.7% year-on-year, up from 7.9% in April.

**Scan the QR to connect  
with us**



**KEDIA ADVISORY**

## **KEDIA STOCKS & COMMODITIES RESEARCH PVT LTD.**

Mumbai. INDIA.

For more details, please contact Mobile: +91 9619551022

Email: [info@kediaadvisory.com](mailto:info@kediaadvisory.com)

SEBI REGISTRATION NUMBER - INH000006156

For more information or to subscribe for monthly updates

Visit [www.kediaadvisory.com](http://www.kediaadvisory.com)

This Report is prepared and distributed by Kedia Stocks & Commodities Research Pvt Ltd. for information purposes only. The recommendations, if any, made herein are expressions of views and/or opinions and should not be deemed or construed to be neither advice for the purpose of purchase or sale through KSCRPL nor any solicitation or offering of any investment /trading opportunity. These information/opinions/ views are not meant to serve as a professional investment guide for the readers. No action is solicited based upon the information provided herein. Recipients of this Report should rely on information/data arising out of their own investigations. Readers are advised to seek independent professional advice and arrive at an informed trading/investment decision before executing any trades or making any investments. This Report has been prepared on the basis of publicly available information, internally developed data and other sources believed by KSCRPL to be reliable. KSCRPL or its directors, employees, affiliates or representatives do not assume any responsibility for or warrant the accuracy, completeness, adequacy and reliability of such information/opinions/ views. While due care has been taken to ensure that the disclosures and opinions given are fair and reasonable, none of the directors, employees, affiliates or representatives of KSCRPL shall be liable for any direct, indirect, special, incidental, consequential, punitive or exemplary damages, including lost profits arising in any way whatsoever from the information/opinions/views contained in this Report. The possession, circulation and/or distribution of this Report may be restricted or regulated in certain jurisdictions by appropriate laws. No action has been or will be taken by KSCRPL in any jurisdiction (other than India), where any action for such purpose (s) is required. Accordingly, this Report shall not be possessed, circulated and/ or distributed in any such country or jurisdiction unless such action is in compliance with all applicable laws and regulations of such country or jurisdiction. KSCRPL requires such a recipient to inform himself about and to observe any restrictions at his own expense, without any liability to KSCRPL. Any dispute arising out of this Report shall be subject to the exclusive jurisdiction of the Courts in India.